

VIVID AT



NORTH
STONEHAM
PARK



EASTLEIGH | HAMPSHIRE

VIVID

NORTH STONEHAM PARK

Eastleigh

PLOT 2

2 bedroom apartment



GROUND FLOOR

Kitchen / Living / Dining Room
5.22m [17'-2"] x 4.61m [15'-1"]

Bedroom 1
4.53m [14'-10"] x 3.29m [10'-9"]

Bedroom 2
3.45m [11'-4"] x 2.63m [8'-7"]



Backed by
HM Government

www.vivdhomes.co.uk
@WeAreVIVIDsales

Please note floorplans are not to scale and are indicative only, total areas are provided as gross internal areas and are subject to variance and these plans do not act as part of a legally binding contract, warranty or guarantee. These plans may not be to scale and dimensions may vary during the build programme. It is common for fixtures and fittings to change during the build programme, for example boilers. Location of windows, doors, kitchen units and appliances may differ. Doors may swing in to the opposite direction to that shown on selected houses. Dimensions, which are taken from the indicated points of measurement are for guidance only and are not intended to be used to calculate the space needed for specific pieces of furniture. If your home is set within a terrace row, the position of the windows may vary from those shown on this plan. The property may also be a handed (mirrored) version of the layout shown here. We advise that you do not order any furniture based on these indicative plans, please wait until you can measure up fully, inside the property. Please speak to a member of our sales team about when you can gain access to take measurements. We will not be responsible for costs incurred due to ordering incorrect furniture. VIVID Housing Limited is registered in England and Wales as a registered society under the Co-operative and Community Benefit Societies Act 2014 under number 7544 with exempt charity status and as a registered provider of social housing with the Homes and Communities Agency under number 4850. Our registered office is at Peninsular House, Wharf Road, Portsmouth, Hampshire, PO2 8HB. All information correct at time of creation – December 2019.

NORTH STONEHAM PARK

Eastleigh

PLOT 5

2 bedroom apartment



FIRST FLOOR

Kitchen / Living / Dining Room
5.22m [17'-2"] x 4.61m [15'-1"]

Bedroom 1
4.53m [14'-10"] x 3.29m [10'-9"]

Bedroom 2
3.45m [11'-4"] x 2.63m [8'-7"]



Backed by
HM Government

www.vivdhomes.co.uk

@WeAreVIVIDsales

Please note floorplans are not to scale and are indicative only, total areas are provided as gross internal areas and are subject to variance and these plans do not act as part of a legally binding contract, warranty or guarantee. These plans may not be to scale and dimensions may vary during the build programme. It is common for fixtures and fittings to change during the build programme, for example boilers. Location of windows, doors, kitchen units and appliances may differ. Doors may swing in to the opposite direction to that shown on selected houses. Dimensions, which are taken from the indicated points of measurement are for guidance only and are not intended to be used to calculate the space needed for specific pieces of furniture. If your home is set within a terrace row, the position of the windows may vary from those shown on this plan. The property may also be a handed (mirrored) version of the layout shown here. We advise that you do not order any furniture based on these indicative plans, please wait until you can measure up fully, inside the property. Please speak to a member of our sales team about when you can gain access to take measurements. We will not be responsible for costs incurred due to ordering incorrect furniture. VIVID Housing Limited is registered in England and Wales as a registered society under the Co-operative and Community Benefit Societies Act 2014 under number 7544 with exempt charity status and as a registered provider of social housing with the Homes and Communities Agency under number 4850. Our registered office is at Peninsular House, Wharf Road, Portsmouth, Hampshire, PO2 8HB. All information correct at time of creation – December 2019.

NORTH STONEHAM PARK

Eastleigh

PLOT 7

2 bedroom apartment



FIRST FLOOR

Kitchen / Living / Dining Room
5.22m [17'-1"] x 3.08m [10'-1"]

Bedroom 1
4.53m [14'-10"] x 3.29m [10'-9"]

Bedroom 2
3.08m [10'-1"] x 2.63m [8'-7"]



Backed by
HM Government

www.vivdhomes.co.uk

@WeAreVIVIDsales

VIVID

Please note floorplans are not to scale and are indicative only, total areas are provided as gross internal areas and are subject to variance and these plans do not act as part of a legally binding contract, warranty or guarantee. These plans may not be to scale and dimensions may vary during the build programme. It is common for fixtures and fittings to change during the build programme, for example boilers. Location of windows, doors, kitchen units and appliances may differ. Doors may swing in to the opposite direction to that shown on selected houses. Dimensions, which are taken from the indicated points of measurement are for guidance only and are not intended to be used to calculate the space needed for specific pieces of furniture. If your home is set within a terrace row, the position of the windows may vary from those shown on this plan. The property may also be a handed (mirrored) version of the layout shown here. We advise that you do not order any furniture based on these indicative plans, please wait until you can measure up fully, inside the property. Please speak to a member of our sales team about when you can gain access to take measurements. We will not be responsible for costs incurred due to ordering incorrect furniture. VIVID Housing Limited is registered in England and Wales as a registered society under the Co-operative and Community Benefit Societies Act 2014 under number 7544 with exempt charity status and as a registered provider of social housing with the Homes and Communities Agency under number 4850. Our registered office is at Peninsular House, Wharf Road, Portsmouth, Hampshire, PO2 8HB. All information correct at time of creation – December 2019.

NORTH STONEHAM PARK

Eastleigh

PLOTS 2-10

2 bedroom apartments



SIDE ELEVATION



FRONT ELEVATION



REAR ELEVATION



SIDE ELEVATION



Backed by
HM Government

www.vivdhomes.co.uk

@WeAreVIVIDsales

Please note floorplans are not to scale and are indicative only, total areas are provided as gross internal areas and are subject to variance and these plans do not act as part of a legally binding contract, warranty or guarantee. These plans may not be to scale and dimensions may vary during the build programme. It is common for fixtures and fittings to change during the build programme, for example boilers. Location of windows, doors, kitchen units and appliances may differ. Doors may swing in to the opposite direction to that shown on selected houses. Dimensions, which are taken from the indicated points of measurement are for guidance only and are not intended to be used to calculate the space needed for specific pieces of furniture. If your home is set within a terrace row, the position of the windows may vary from those shown on this plan. The property may also be a handed (mirrored) version of the layout shown here. We advise that you do not order any furniture based on these indicative plans, please wait until you can measure up fully, inside the property. Please speak to a member of our sales team about when you can gain access to take measurements. We will not be responsible for costs incurred due to ordering incorrect furniture. VIVID Housing Limited is registered in England and Wales as a registered society under the Co-operative and Community Benefit Societies Act 2014 under number 7544 with exempt charity status and as a registered provider of social housing with the Homes and Communities Agency under number 4850. Our registered office is at Peninsular House, Wharf Road, Portsmouth, Hampshire, PO2 8HB. All information correct at time of creation – December 2019.



NORTH STONEHAM PARK

EASTLEIGH



Backed by
HM Government

www.vividhomes.co.uk
[@WeAreVIVIDsales](https://twitter.com/WeAreVIVIDsales)



Please note floorplans are not to scale and are indicative only, total areas are provided as gross internal areas and are subject to variance and these plans do not act as part of a legally binding contract, warranty or guarantee. These plans may not be to scale and dimensions may vary during the build programme. It is common for fixtures and fittings to change during the build programme, for example boilers. Location of windows, doors, kitchen units and appliances may differ. Doors may swing in to the opposite direction to that shown on selected houses. Dimensions, which are taken from the indicated points of measurement are for guidance only and are not intended to be used to calculate the space needed for specific pieces of furniture. If your home is set within a terrace row, the position of the windows may vary from those shown on this plan. The property may also be a handed (mirrored) version of the layout shown here. We advise that you do not order any furniture based on these indicative plans, please wait until you can measure up fully, inside the property. Please speak to a member of our sales team about when you can gain access to take measurements. We will not be responsible for costs incurred due to ordering incorrect furniture. VIVID Housing Limited is registered in England and Wales as a registered society under the Co-operative and Community Benefit Societies Act 2014 under number 7544 with exempt charity status and as a registered provider of social housing with the Homes and Communities Agency under number 4850. Our registered office is at Peninsular House, Wharf Road, Portsmouth, Hampshire, PO2 8HB. All information correct at time of creation – January 2020.

NORTH STONEHAM PARK

EASTLEIGH



Backed by
HM Government

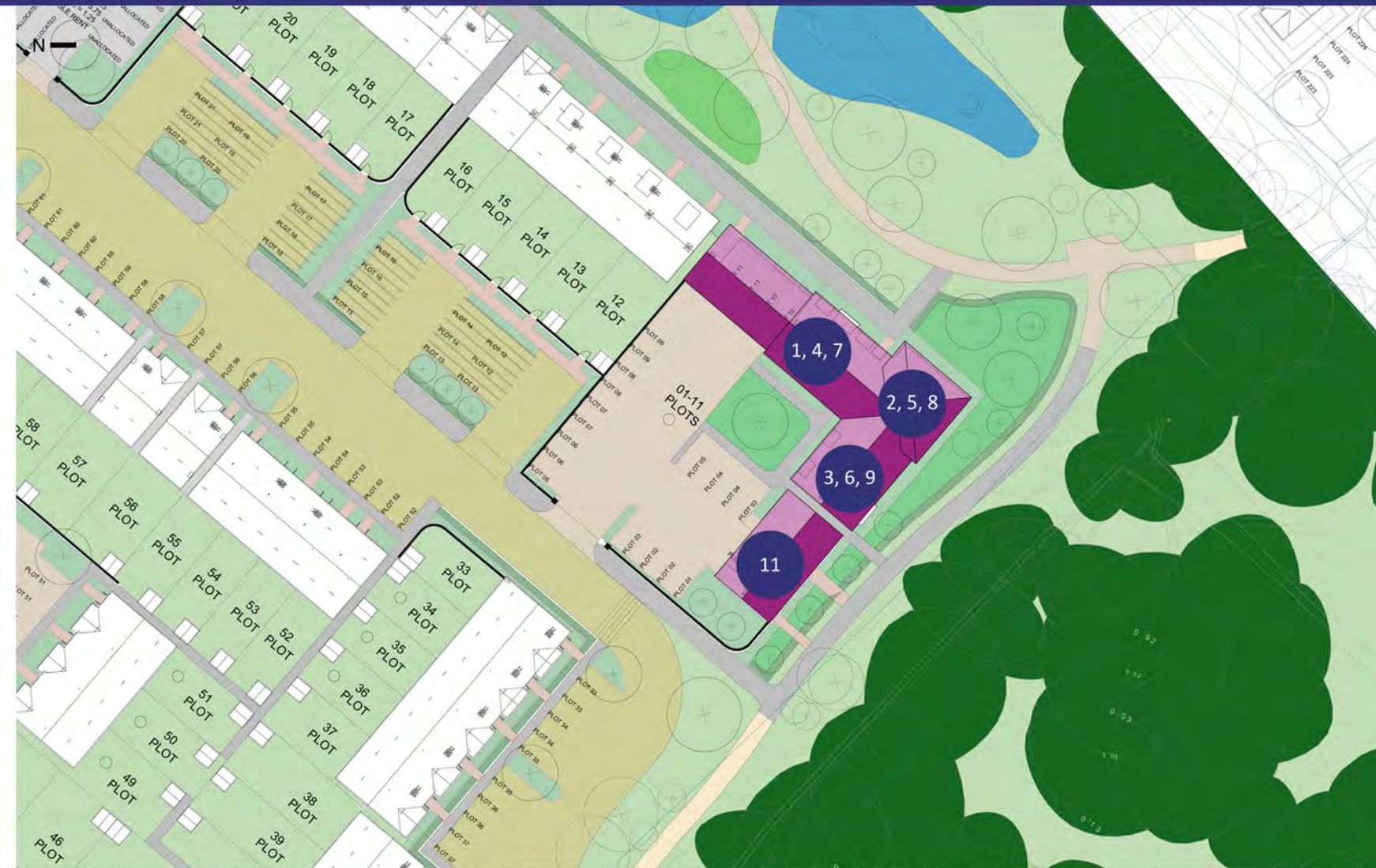
www.vividhomes.co.uk
[@WeAreVIVIDsales](https://twitter.com/WeAreVIVIDsales)



Please note floorplans are not to scale and are indicative only, total areas are provided as gross internal areas and are subject to variance and these plans do not act as part of a legally binding contract, warranty or guarantee. These plans may not be to scale and dimensions may vary during the build programme. It is common for fixtures and fittings to change during the build programme, for example boilers. Location of windows, doors, kitchen units and appliances may differ. Doors may swing in to the opposite direction to that shown on selected houses. Dimensions, which are taken from the indicated points of measurement are for guidance only and are not intended to be used to calculate the space needed for specific pieces of furniture. If your home is set within a terrace row, the position of the windows may vary from those shown on this plan. The property may also be a handed (mirrored) version of the layout shown here. We advise that you do not order any furniture based on these indicative plans, please wait until you can measure up fully, inside the property. Please speak to a member of our sales team about when you can gain access to take measurements. We will not be responsible for costs incurred due to ordering incorrect furniture. VIVID Housing Limited is registered in England and Wales as a registered society under the Co-operative and Community Benefit Societies Act 2014 under number 7544 with exempt charity status and as a registered provider of social housing with the Homes and Communities Agency under number 4850. Our registered office is at Peninsular House, Wharf Road, Portsmouth, Hampshire, PO2 8HB. All information correct at time of creation – January 2020.

NORTH STONEHAM PARK

EASTLEIGH



Backed by
HM Government

www.vividhomes.co.uk
[@WeAreVIVIDsales](https://twitter.com/WeAreVIVIDsales)



Please note floorplans are not to scale and are indicative only, total areas are provided as gross internal areas and are subject to variance and these plans do not act as part of a legally binding contract, warranty or guarantee. These plans may not be to scale and dimensions may vary during the build programme. It is common for fixtures and fittings to change during the build programme, for example boilers. Location of windows, doors, kitchen units and appliances may differ. Doors may swing in to the opposite direction to that shown on selected houses. Dimensions, which are taken from the indicated points of measurement are for guidance only and are not intended to be used to calculate the space needed for specific pieces of furniture. If your home is set within a terrace row, the position of the windows may vary from those shown on this plan. The property may also be a handed (mirrored) version of the layout shown here. We advise that you do not order any furniture based on these indicative plans, please wait until you can measure up fully, inside the property. Please speak to a member of our sales team about when you can gain access to take measurements. We will not be responsible for costs incurred due to ordering incorrect furniture. VIVID Housing Limited is registered in England and Wales as a registered society under the Co-operative and Community Benefit Societies Act 2014 under number 7544 with exempt charity status and as a registered provider of social housing with the Homes and Communities Agency under number 4850. Our registered office is at Peninsular House, Wharf Road, Portsmouth, Hampshire, PO2 8HB. All information correct at time of creation – January 2020.